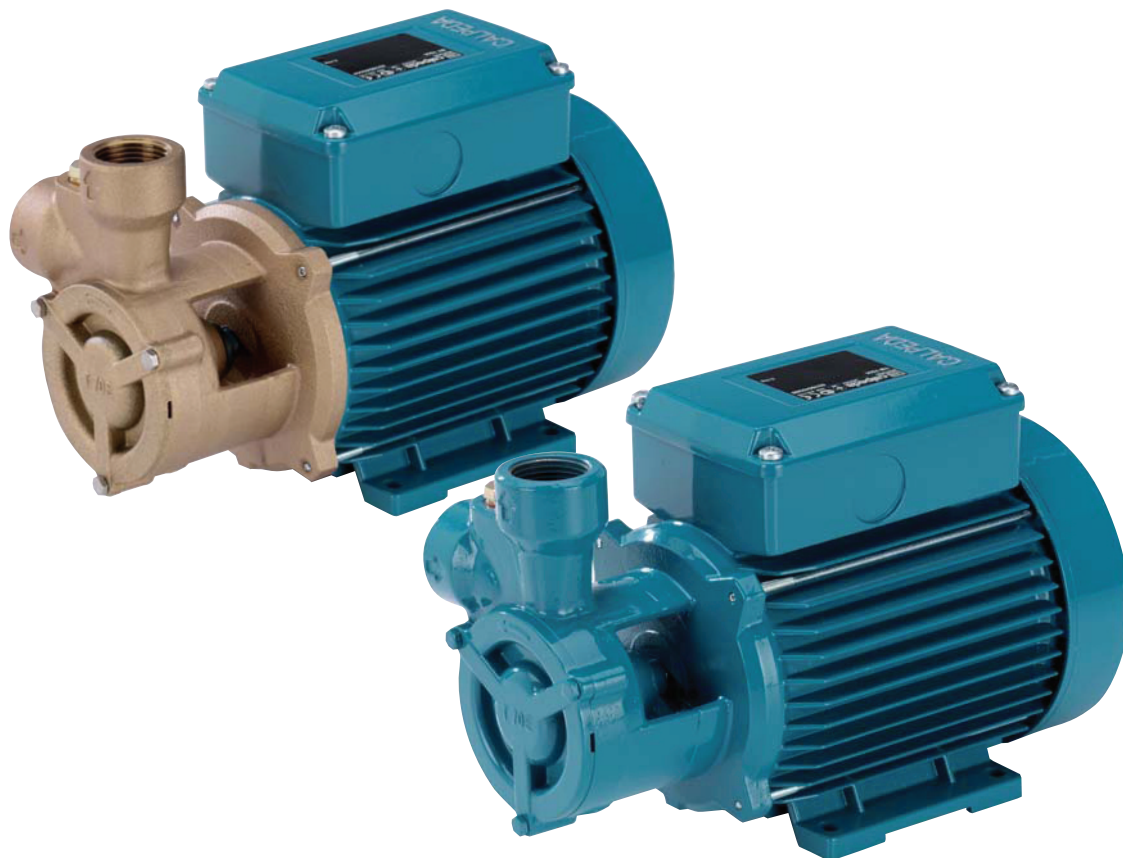


T, TP 60 Hz



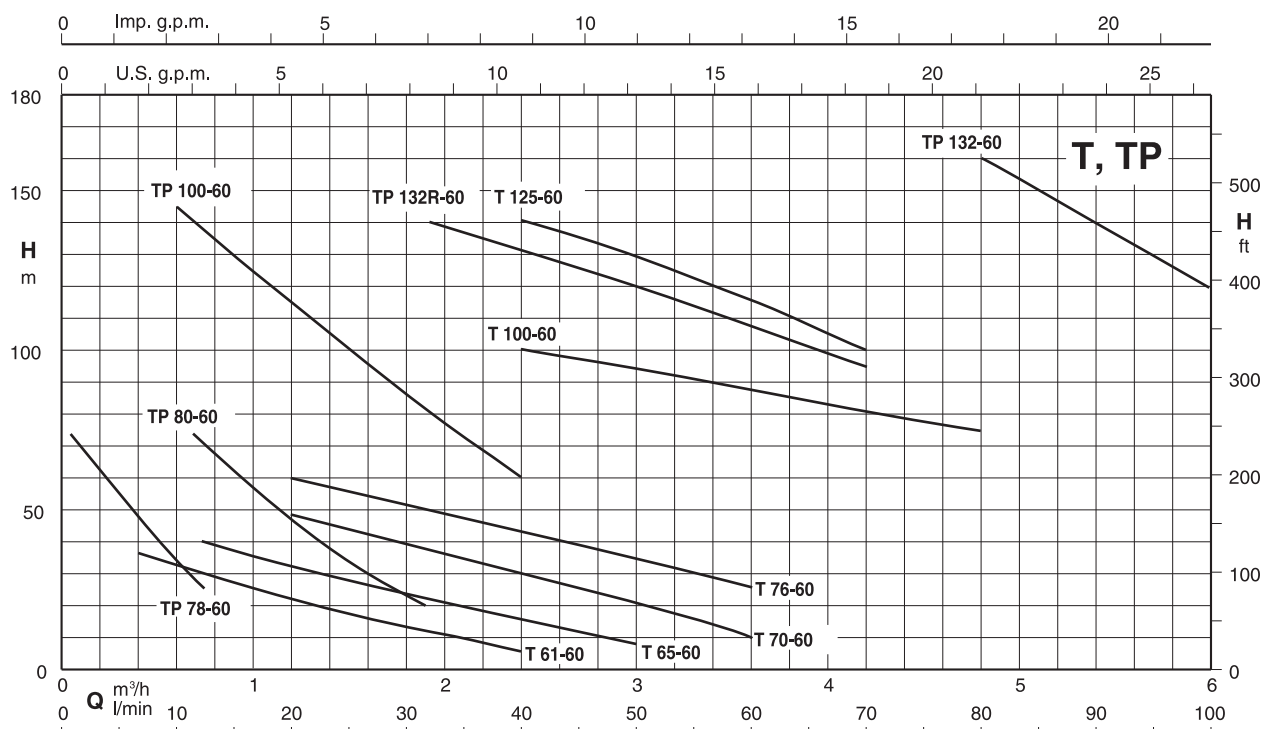
Peripheral Pumps with turbine impeller

摩擦式泵浦 渦輪式葉片



Coverage chart - 性能總表

n ≈ 3450 rpm



Construction

Close-coupled peripheral pumps (regenerative pumps) with turbine impeller.

Connections: threaded ports **ISO 228/1**.
threaded ports **NPT** (ANSI/ASME B1.20.1) on request

T, TP: version with pump casing and lantern bracket in cast iron.
B-T, B-TP: version with pump casing and lantern bracket in bronze
(the pumps are supplied fully painted).

Applications

For clean liquids without abrasives, without suspended solids, non-explosive, non-aggressive for the pump materials.

For increasing network pressure (follow local specifications).
For the reduced dimensions, these pumps are very well suitable to be mounted in cooling and air-conditioning machines and equipments, circulation, boiler feed.

Operating conditions

Liquid temperature from -10 °C to +90 °C.
Ambient temperature up to 40 °C.
Total suction lift up to 7 m.
Continuous duty.

Motor

2-pole induction motor, 60 Hz (n = 3450 rpm).
T, TP: three-phase 220/380 V, 220/440 V, up to 3 kW;
380/660 V, from 4 to 7,5 kW;
TM, TPM: single-phase 110 V, 127 V, 220 V.
with thermal protector up to 1.1 kW only 220V.
Capacitor inside the terminal box.
Insulation class F.
Protection IP 54.
Classification scheme IE2 for three-phase motors from 0,75 kW to 5,5 kW, IE3 from 7,5 kW.
Constructed in accordance with: EN 60034-1; EN 60034-30.
EN 60335-1, EN 60335-2-41.

Special features on request

- Other voltages.
- Protection IP 55.
- Special mechanical seal
- Higher or lower liquid or ambient temperatures.

Materials

Components	T, TP	B-T, B-TP
Pump casing	Cast iron	Bronze
Lantern bracket	GJL 200 EN 1561	G-Cu Sn 10 EN 1982
Casim cover	Cast iron	Bronze
	GJL 200 EN 1561	G-Cu Sn 10 EN 1982
	Brass P- Cu Zn 40 Pb 2 UNI 5705 for T 61-65-70, B-T 61-70	
Impeller	Brass P- Cu Zn 40 Pb 2 UNI 5705 Bronze G-Cu Sn 10 EN 1982 for T 125, TP 132-132R	
Shaft	Cr-Ni steel AISI 303	Cr-Ni-Mo steel AISI 316
	T 70-76, TP 78-80-100	
	Chrome steel AISI 430 T 61-65-100-125, TP 132-132R	
Mechanical seal	Carbon - Ceramic - NBR	

結構

直結摩擦式泵浦（再生泵浦）；渦輪式葉片。

連接口：牙口 **ISO 228/1**

牙口 **NPT** (ANSI/ASME B1.20.1) 依需求提供。

T, TP：泵浦外殼與托架為鑄鐵材質
B-T, B-TP：泵浦外殼與托架為青銅材質。
(泵浦整體烤漆)

應用

無雜質、懸浮微粒或顆粒、無爆裂物質或不具腐蝕性之乾淨水。

供水系統之加壓應用（按照當地規範）。
為了減少體積，此款泵浦適合安裝於冷卻、空調循環設備或鍋爐設備。

操作條件

液體溫度 -10°C 至 +90°C
周圍溫度至 40°C
總吸入揚高至 7m
連續運轉

馬達

2極感應電動馬達，60Hz(n=3450 rpm)
T, TP: 三相 220/380 V, 220/440 V, 3 kW 以下;
380/660 V, 4 至 7.5 kW。
TM, TPM: 單相 110 V, 127 V, 220 V
只有 220 V 配有 1.1 kW 以下之過熱保護器。
接線盒內有電容器。
絕緣等級：F
保護等級：IP54
三相 0,75 - 5,5 kW 以上使用歐盟效能指標高效率 IE2，
7,5 kW 以上為 IE3。
結構設計符合：EN 60034-1; EN 60034-30;
EN 60335-1; EN 60335-2-41 之規範。

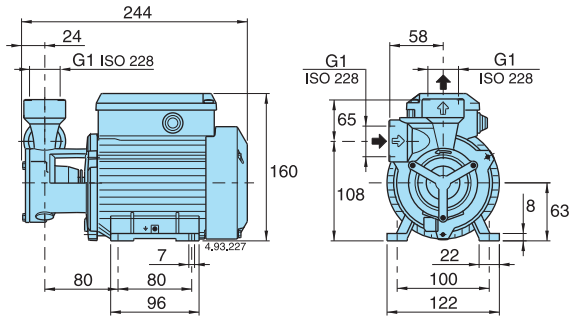
特殊需求

- 其他電壓。
- 保護等級 IP 55。
- 特殊機械軸封。
- 更高液體或周圍溫度。

材質（水液壓零件）

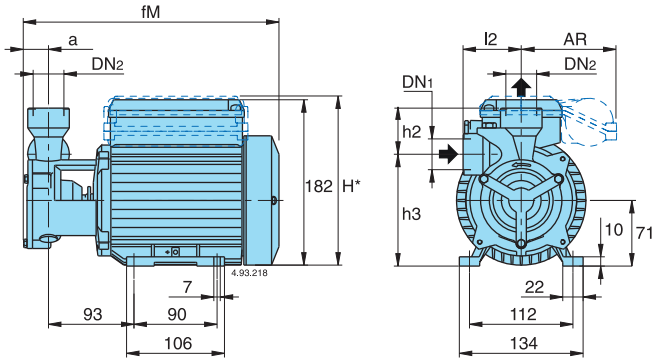
零件	T, TP	B-T, B-TP
泵浦外殼	鑄鐵	青銅
托架	GJL 200 EN 1561	G-Cu Sn 10 EN 1982
泵浦外罩	鑄鐵	青銅
	GJL 200 EN 1561	G-Cu Sn 10 EN 1982
	T 61-65-70, B-T 61-70 為黃銅 P- Cu Zn 40 Pb 2 UNI 5705	
葉片	黃銅 P- Cu Zn 40 Pb 2 UNI 5705 T 125, TP 132-132R 為青銅 G-Cu Sn 10 EN 1982	
軸心	T 70-76, TP 78-80-100 為不鏽鋼 AISI 303	不鏽鋼 AISI 316
	T 61-65-100-125, TP 132-132R 為不鏽鋼 AISI 430	
機械軸封	碳精 - 陶瓷 - NBR	

Dimensions and weights - 尺寸及重量



T 61E-60: kg 6,3
B- T 61E-60: kg 6,5
T 65E-60: kg 7,3
B- T 65E-60: kg 7,5

DN NPT Version on demand - NPT 依需求提供

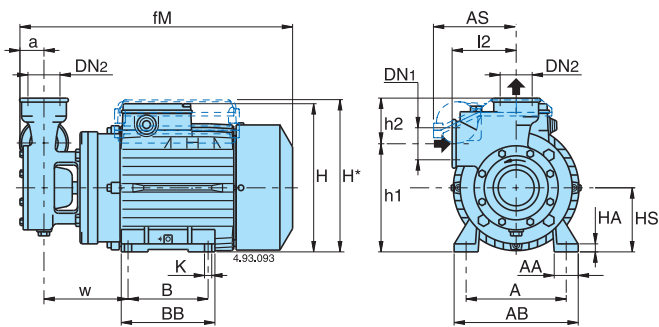


TYPE 型號	DN1 ISO 228	DN2 ISO 228	DN NPT	mm					kg	
				a	fM	h2	h1	l2	T	B-T
T 70-60/A B-T 70-60/A	G 1	G 1	✓	24	278	50	121	63	11,2	11,6
TP 78-60/A B-TP 78-60/A	G 1/2	G 1/2	✓	22	276	24	127	56	8,2	8,8

✓ NPT Version on demand - NPT 依需求提供

TYPE 型號	H*	AR mm		
		220V	127V	110V
TM 70-60/A, B-TM 70-60/A	187	●	116	116

● Standard dimensions - 標準尺寸
 □ Cannot constructed - 無法製造提供



TYPE 型號	Hc	AS mm		
		220V	127V	110V
TPM 80E-60, B-TPM 80E-60	133	●	116	131
TM 76E-60	133	●	131	131

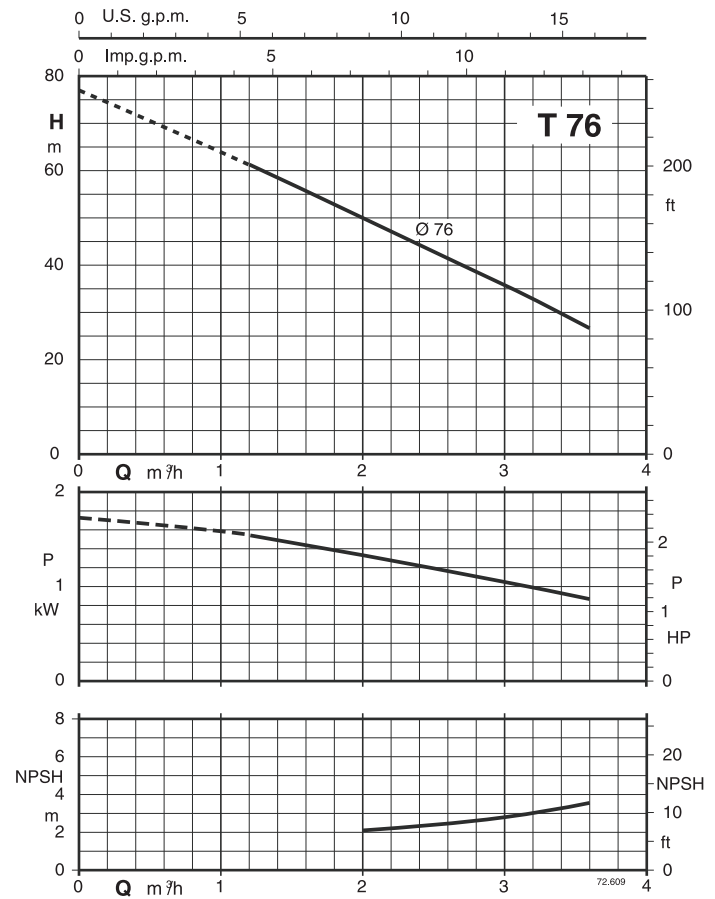
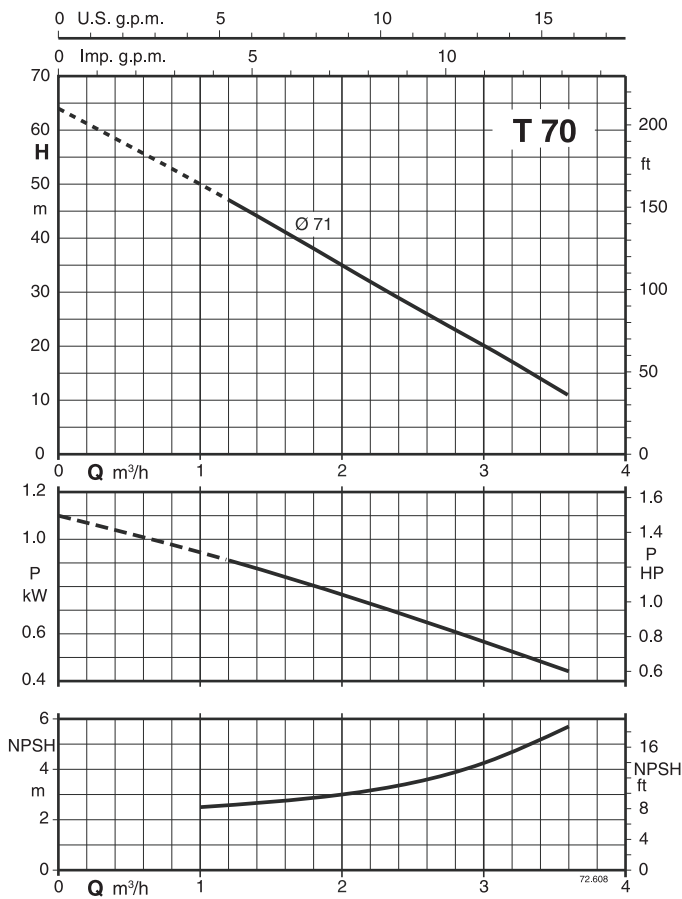
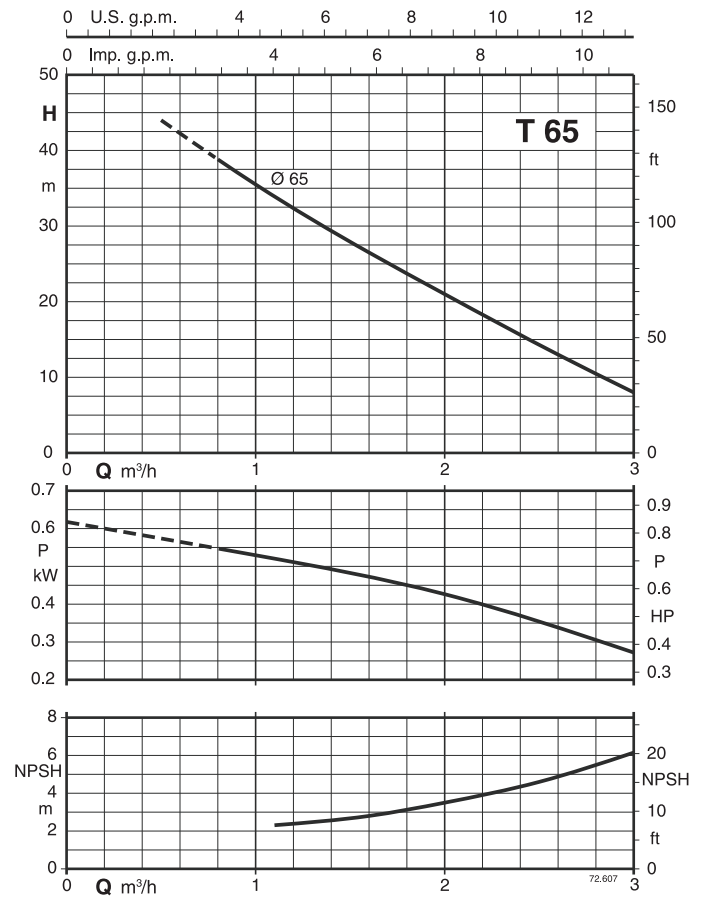
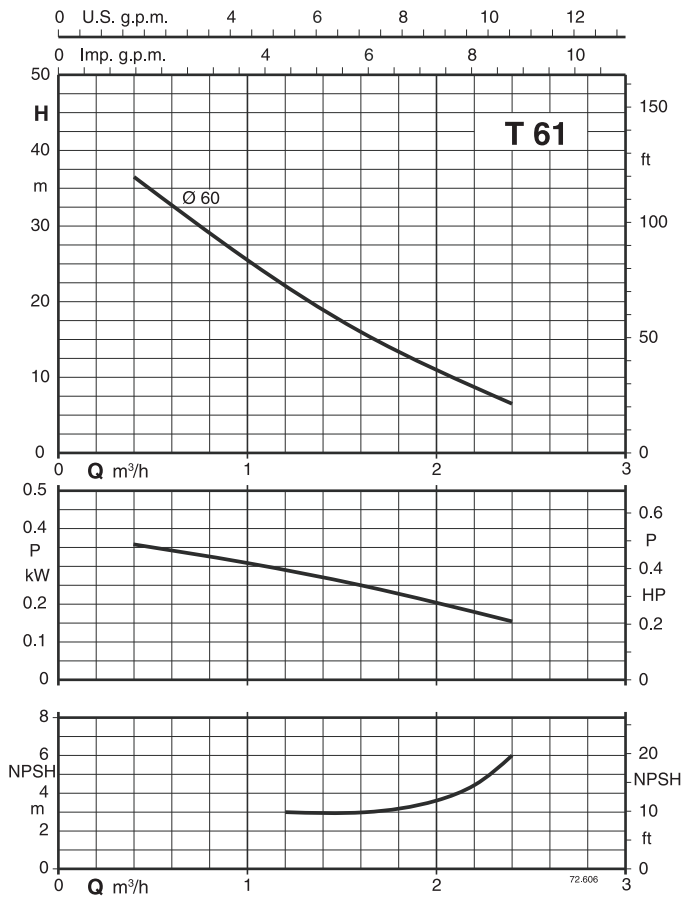
● Standard dimensions - 標準尺寸
 □ Cannot constructed - 無法製造提供

TYPE 型號	DN1 ISO 228	DN2 ISO 228	DN NPT	mm														kg			
				a	fM	HS	h2	h1	H	BB	B	AB	A	AA	K	l2	w	HA	T, TP	B-TP	
T 76E-60	-	G 1 1/4	G 1 1/4	✓	26	338	80	56	136	208	117	100	155	125	30	9	80	105	10	18,4	-
T 100-60/A	-	G 1 1/4	G 1 1/4	✓	32	410	90	59	161	226	152	125	180	140	40	9,5	95	121	12	32,5	-
T 125-60/A	-	G 1 1/4	G 1 1/4	✓	32	505	112	75	192	272	180	140	230	190	50	11,5	90	209	14	39,5	-
TP 80E-60 B-TP 80E-60	G 3/4	G 3/4	✓	27	332	80	35	135	208	117	100	155	125	30	9	60	104	10	16,4	16,8	
TP 100-60/A	-	G 3/4	G 3/4	✓	27	387	80	38	142	208	117	100	155	125	30	9	65	113	10	23,2	-
TP 132R-60/A	-	G 1 1/4	G 1 1/4	✓	42	485	112	70	202	272	180	140	230	190	50	11,5	100	183	14	58,5	-
TP 132-60/A	-	G 1 1/4	G 1 1/4	✓	42	485	112	70	202	272	180	140	230	190	50	11,5	100	183	14	58,5	-

✓ NPT Version on demand - NPT 依需求提供

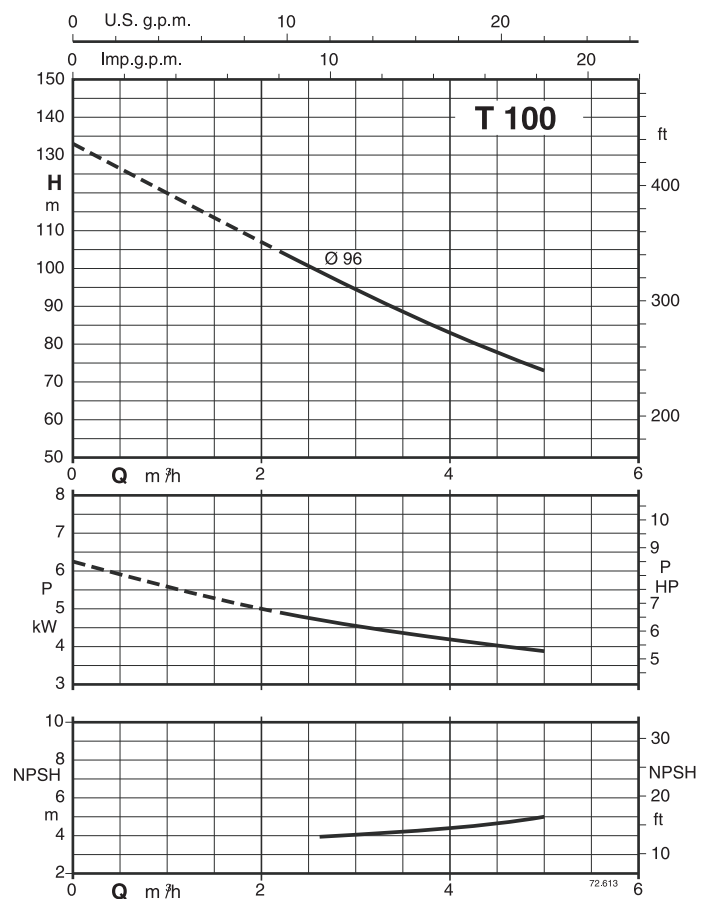
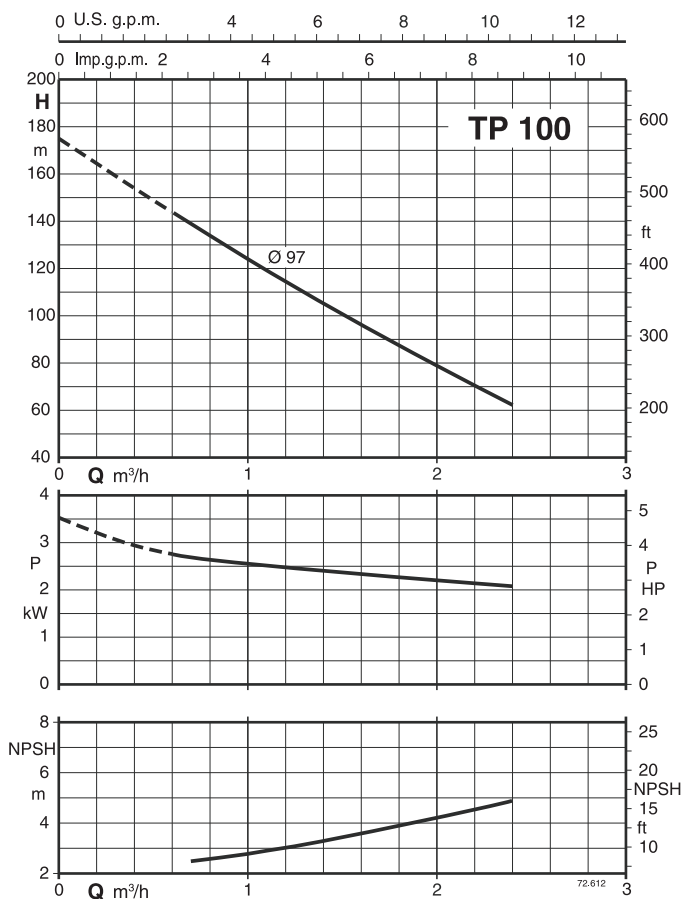
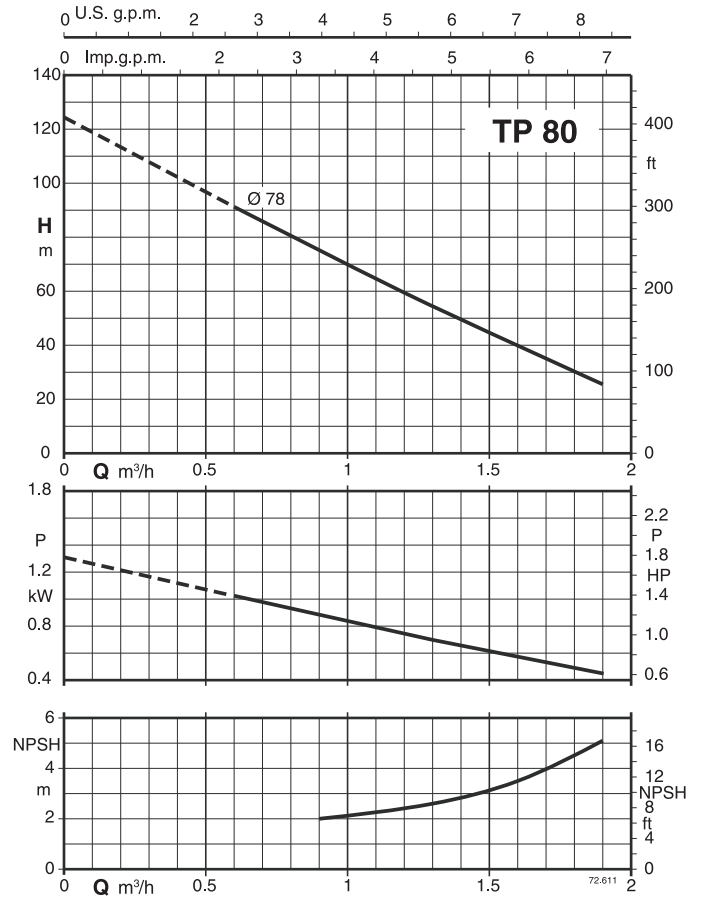
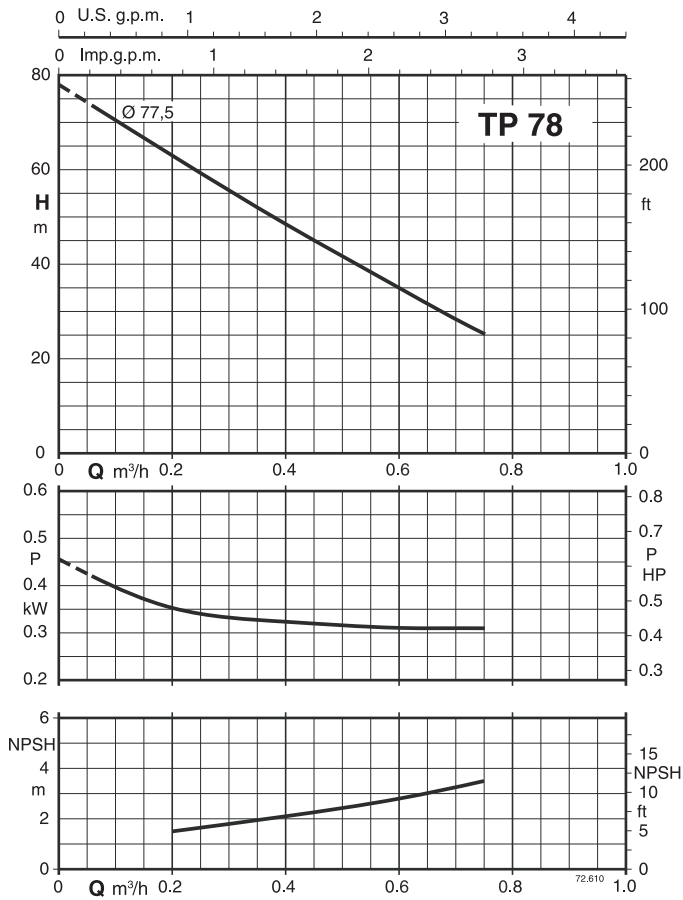
Characteristic curves - 性能曲線

$n \approx 3450 \text{ rpm}$



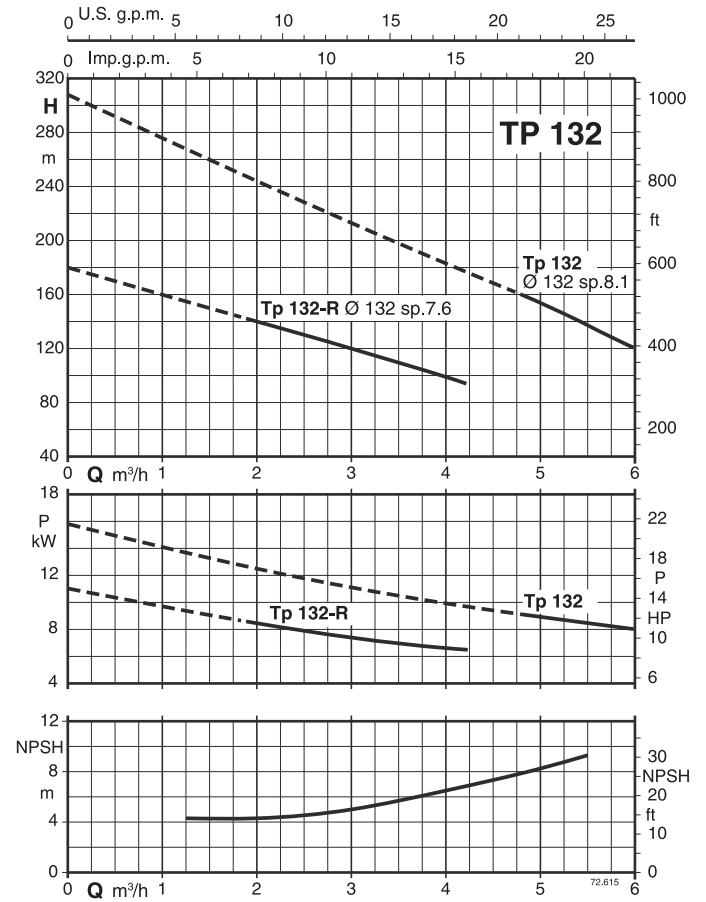
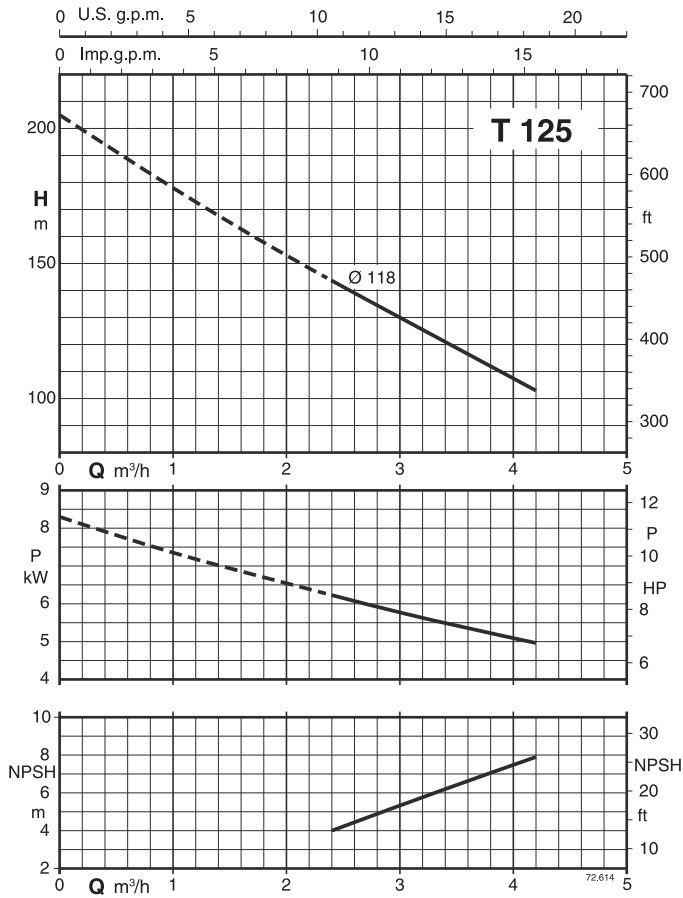
Characteristic curves - 性能曲線

$n \approx 3450$ rpm

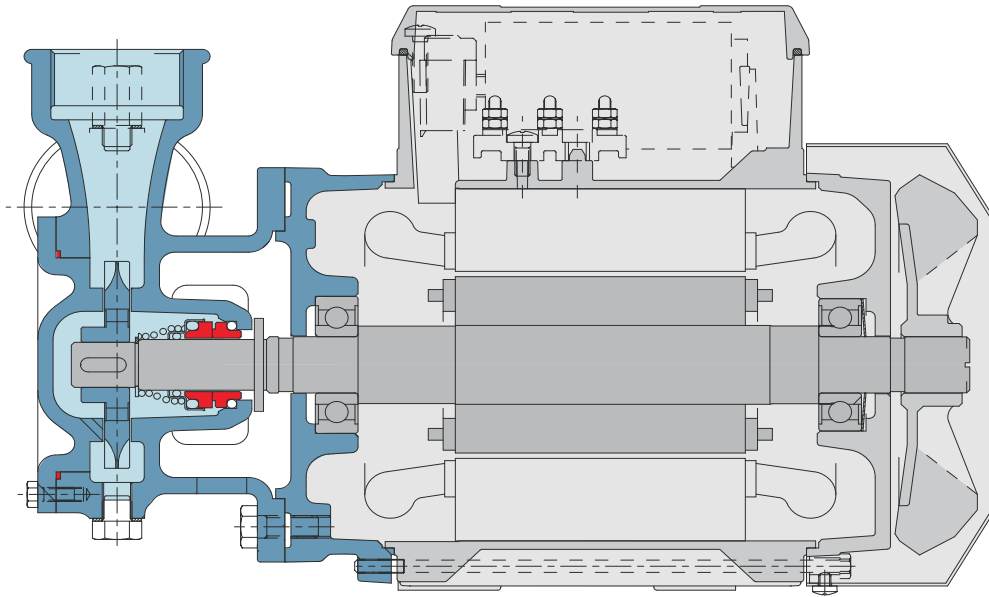


Characteristic curves - 性能曲線

$n \approx 3450 \text{ rpm}$



Features - 特色



Range

The high number of pumps in the range can meet the widest range of services required by the user.

範圍

泵浦多樣化的操作範圍可涵蓋使用者之最廣需求。

Flexibility

The option to choose between cast iron and bronze materials for the hydraulic parts in contact with the pumped liquid allows T-TP series pumps to be selected for use with different types of liquids.

靈活性

泵浦接觸液體零件有鑄鐵及青銅材質可供選擇，T,TP系列泵浦可適用於不同類型之液體。

Reliability

The bearing and shaft are designed to ensure the reduction of the stress, providing high reliability under all operating conditions.

可靠

軸承及軸心的設計可減少壓力，在所有操作條件下提供更佳的可靠性。

Optimized hydraulics

The pump hydraulics are designed to ensure high performance and consistency of performance.

效能進階

泵浦水液壓零件設計提供高效能及性能的一致性。